

Mac Wireless Printing Instructions

For quick and easy access to printing, please scan the barcode or copy and paste the provided link and follow the prompts.

In the event that the website is experiencing any issues, you have two options: you may visit the TRC (Technology Resource Center) or refer to the following instructions provided below.



Need Printing on a Personal Device?



[http://
10.10.8.125:9163/setup](http://10.10.8.125:9163/setup)

Works on all devices
(Windows, MacOS, Android, and more)

Requires the user to be on SMSU wifi

The following set of instructions will guide you on how to manually add a printer, and gain access to the printers at SMSU.

Materials needed:

- A functional computer (specifically a Mac; refer to the other instructions if you have a different computer)
- Internet connection (specifically to SMSU network)

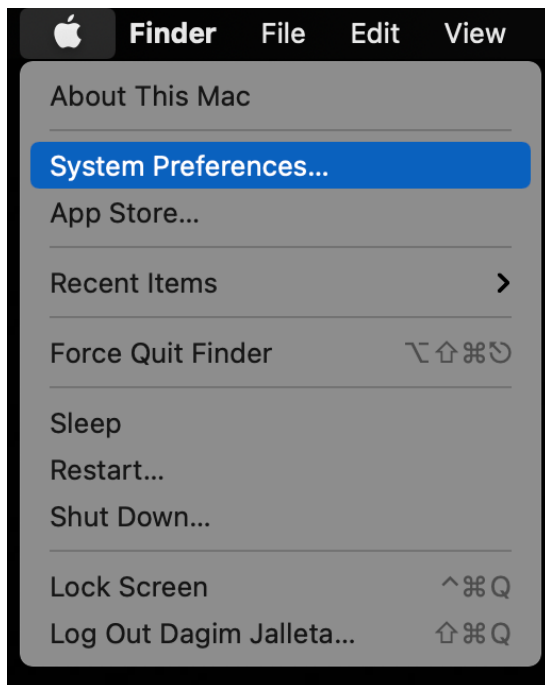
Note: Printing is supported on Mac OS X v10.11 to v10.13. Versions below this range are not supported. To check the version of your OS, click the Apple icon located at the top left corner of the screen, and select 'About This Mac'.

1. Adding your preferred printer

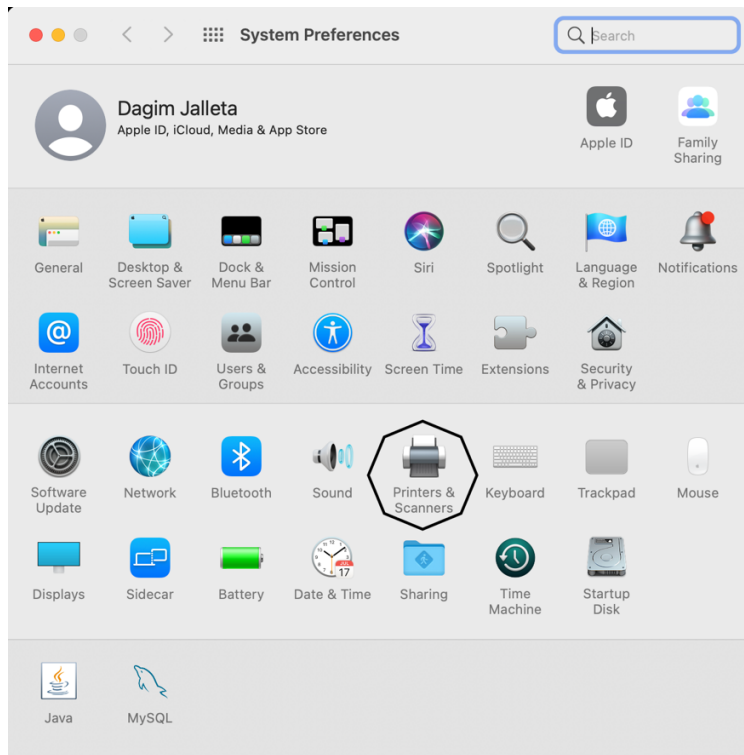
1.1 The first step is to click the System Settings icon in the Dock.



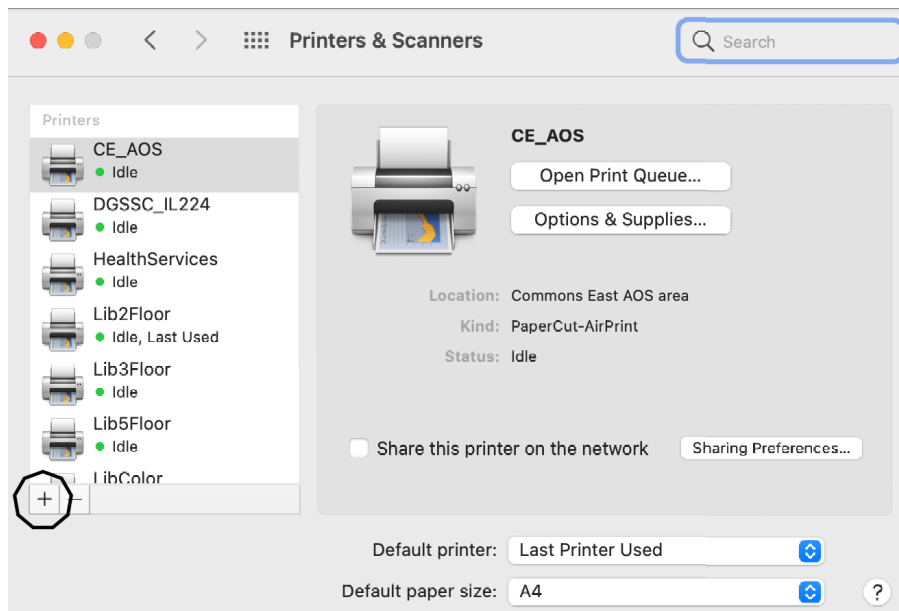
If you are unable to find it on your Dock, click on the Apple icon located in the top left corner, and then select "System Preferences"



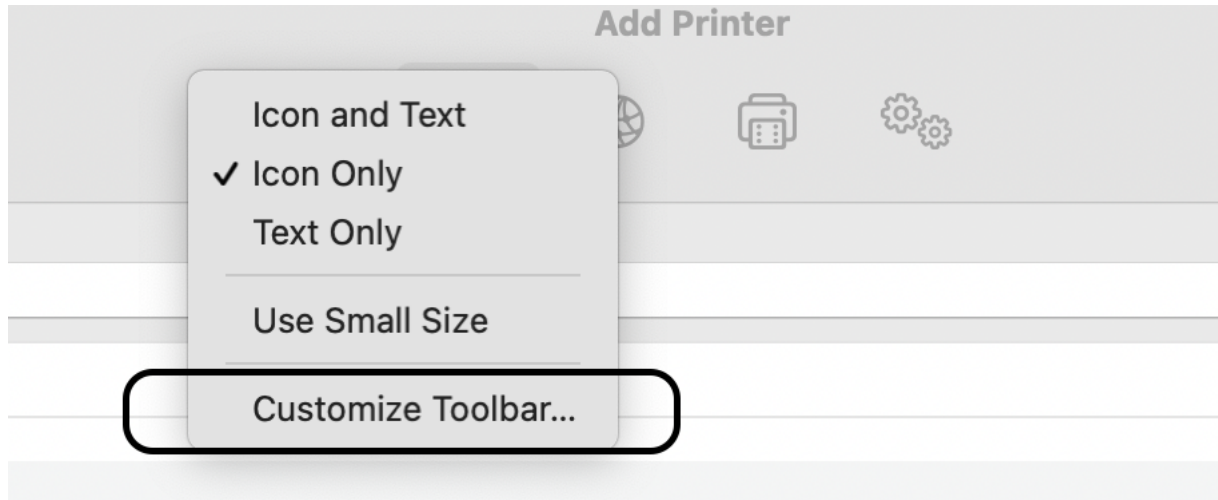
1.2 From there, click on “Printers & Scanners.”



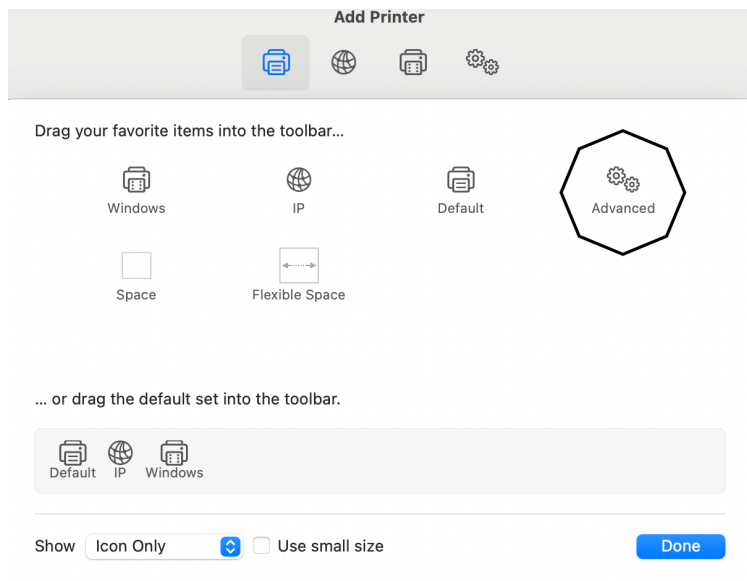
1.3 Click on the “+” button to add the printer.



1.4 Hold down the “Control” key and right-click on the blank space to the right of the Windows icon. Then, select “Customize Toolbar.”



1.5 Drag and drop the advanced icon to the tool bar.



1.6 For the prompt that follows, please copy and paste the text.

Type: "Windows printer via spoolss"(select from the drop down options)

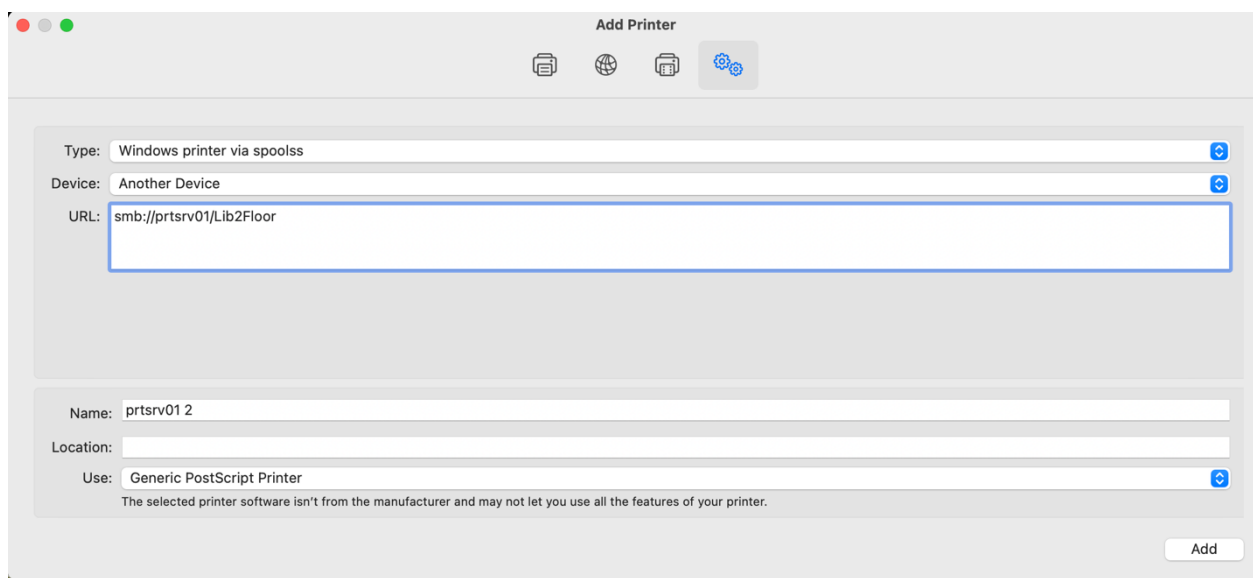
Device: Default (Another Device)

URL - smb://prtsrv01/(Printer Name) you're trying to print

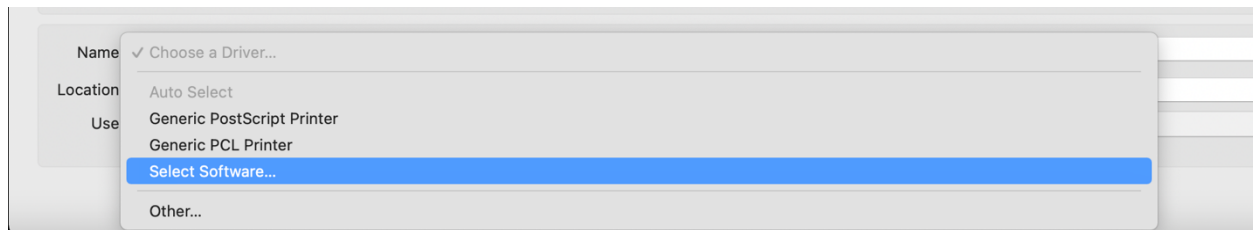
Example - smb: //smsuprt01.smsu.edu/Lib2Floor

1.7 Choose Name: Type Printer Name (Example: Lib2Floor)

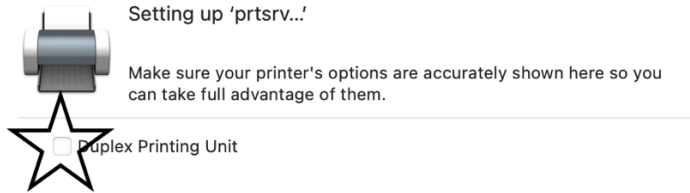
Print Using: Choose Generic PostScript Printer for the correct driver.



Note: If it is a color printer, click on "Choose a Driver," then select "Select Software." In the filter, type in "HP LJ 300-400 color MFP M375-M475" and click "OK."



1.8 Please check the Duplex Printing Unit and click OK.



2. Printing a document

2.1 If you're using word Click File > Print

2.2 Hover over the Printers to locate the dropdown menu, then click on the recently added printer.

