

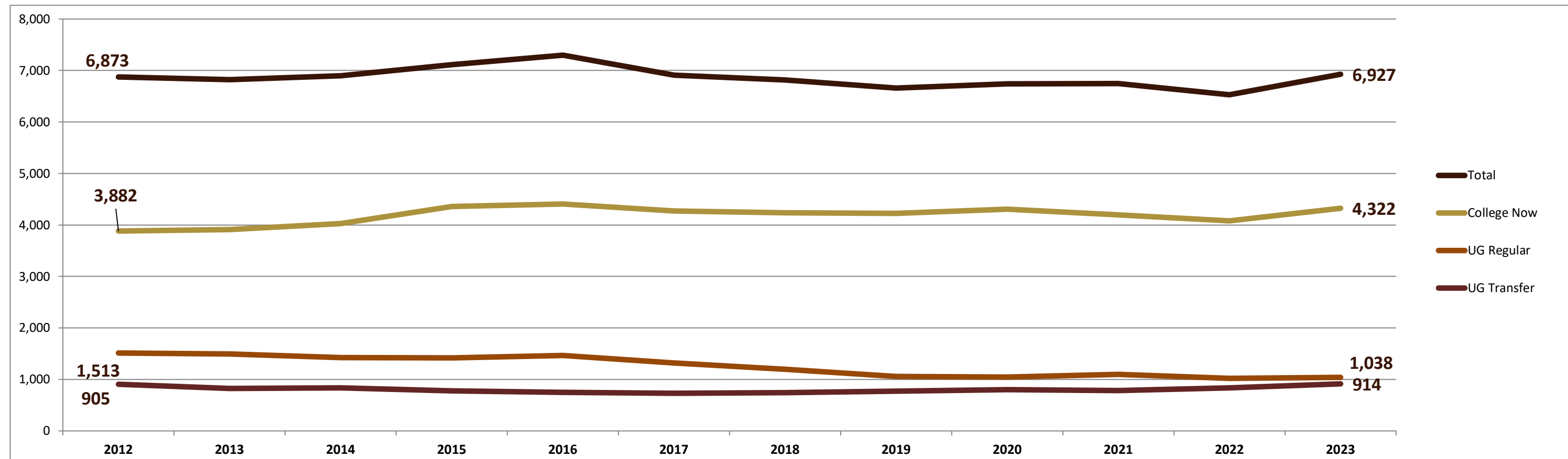
SMSU Enrollment History

Fall Semesters 2012 to 2023

By Admissions Status



Admissions Category	2012	2013	2014	2015	2016	2017	2018	2019	2020	2021	2022	2023
Degree-Seeking Undergrad												
UG Regular	1,513	1,493	1,426	1,416	1,464	1,317	1,195	1,055	1,047	1,101	1,021	1,038
UG Transfer	905	827	834	778	748	731	741	770	801	782	839	914
UG with Previous Degree	54	57	49	55	73	74	77	89	85	87	87	74
Non-Degree-Seeking Undergrad												
College Now	3,882	3,910	4,025	4,362	4,407	4,270	4,234	4,226	4,304	4,196	4,081	4,322
PSEO	55	49	80	58	70	46	62	57	45	104	75	113
Non-PSEO HS Enroll.	1	1	2	3	-	1						
UG Unclassified	25	33	28	36	47	31	39	43	37	39	38	26
UG Unclass. w/Degree	4	9	7	4	3	9	4	2	9	1	3	4
Graduate												
Graduate Cert./Licens.			0	0	1	1	4	18	29	39	31	20
Graduate Regular	374	404	416	360	367	396	395	366	338	357	323	375
Graduate Unclassified	48	26	17	16	71	16	25	13	17	9	11	13
Grad. Unclassified w/Degree									9	9	3	0
Post Masters Regular	6	9	7	21	21	5	10	8	12	13	12	16
Post Masters Unclass.	6	6	5	3	26	6	12	1	2	1	0	1
Specialist						7	20	12	7	9	5	11
Total	6,873	6,824	6,896	7,112	7,298	6,910	6,818	6,660	6,742	6,747	6,529	6,927



Source: ISRS_ST_TERM_DATA and SMSU Supertable History, 30th Day Data

Note: Data from 2006 to 2017 is sourced from SMSU internal Data warehouse Academic Year Supertable. College Now data for 2004 is merged from ISRS_ST_TERM_DATA. All other data is Final graded (except current term) from AY_SUPERTABLE